

Finding the Moral Community:

Drinking, Sex, and Drug Use Among American
University Students.

Jerome R. Koch
Alden E. Roberts
Myrna L. Armstrong
Texas Tech University

Presented at the Annual Meeting of the
Society for the Scientific Study of Religion
October 28, 2016, Atlanta, GA

jerome.koch@ttu.edu

This research was supported by a generous
grant from the

E.A. Franklin Charitable Trust

(and from viewers like you).

Thank you!

drjkoch.org – Seeking the Moral Community

Demographics of the Twelve University Samples

| | Three Christian | Six Public | Three Secular Private |
|----------------|--------------------|---------------|-----------------------------|
| • N | 770 | 2394 | 446 |
| • % Aged 18-20 | 87 | 83 | 70 |
| • % Anglo | 69 | 67 | 64 |
| • % Female | 68 | 67 | 58 |

Overall Response Rate: 77%

The “Moral Communities Hypothesis.”

I suggest that what counts is not only whether a particular person is religious, but whether this religiousness is, or is not, ratified by the social environment. The idea here is that religion is empowered to produce conformity to the norms only as it is sustained through interaction and is accepted by the majority as a valid basis for action. ... Religious individuals will be less likely than those who are not religious to commit delinquent acts, *but only in communities where the majority of the people are actively religious.*

Stark, Rodney. 1996. “Religion as Context: Hellfire and Delinquency One More Time.” *Sociology of Religion* 57(2): 163-173.

Variables, Scales, and Results from Surveying Students

Religiosity

A Scale of Eleven Questions:

- Strength of Religious Faith
- Frequency of Prayer
- Saying Grace Before Meals
- Praying for Personal Needs
- Praying for Specific Others
- Praying for Others in General
- Closeness to God
- Beliefs about God
- Personal Beliefs About Jesus
- Belief in Religious Salvation
- Church Attendance

Range = 5 to 52

Cronbach's Alpha Measure of Reliability = .92

Davis, J.A., T.W. Smith, and P.V. Marsden. 2004. *General Social Surveys, 1972-2004: [CUMULATIVE FILE]*[Computer File]. ICPSR 04295-v. 2. Chicago, IL: National Opinion Research Center [producer], 2005. Storrs, CT: Roper Center for Public Opinion Research, University of Connecticut/Ann Arbor, MI: Inter-university Consortium for Political and Social Research [distributors], 2006-04-05.

Fundamentalism

A Scale of Three Questions:

I am sure that the Bible contains no errors or contradictions.

It is very important for true Christians to believe that the Bible is the infallible Word of God.

The Bible is the final and complete guide to morality; it contains God's answers to all important questions about right and wrong.

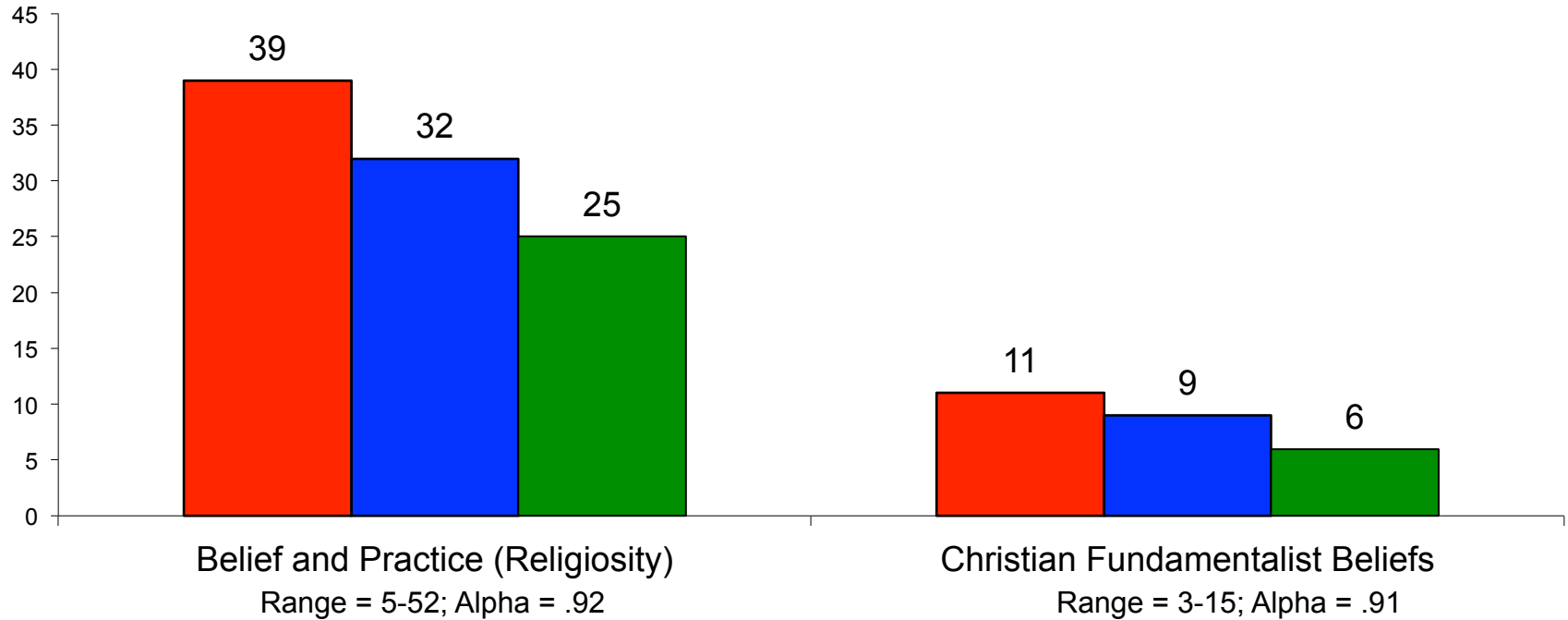
Response Choices: "Strongly Disagree" to "Strongly Agree"

Range = 3 to 15

Cronbach's Alpha Measure of Reliability = .91

Figure 1

Religion by School Type



Comparative Percentages

■ Christian Schools

■ State Schools

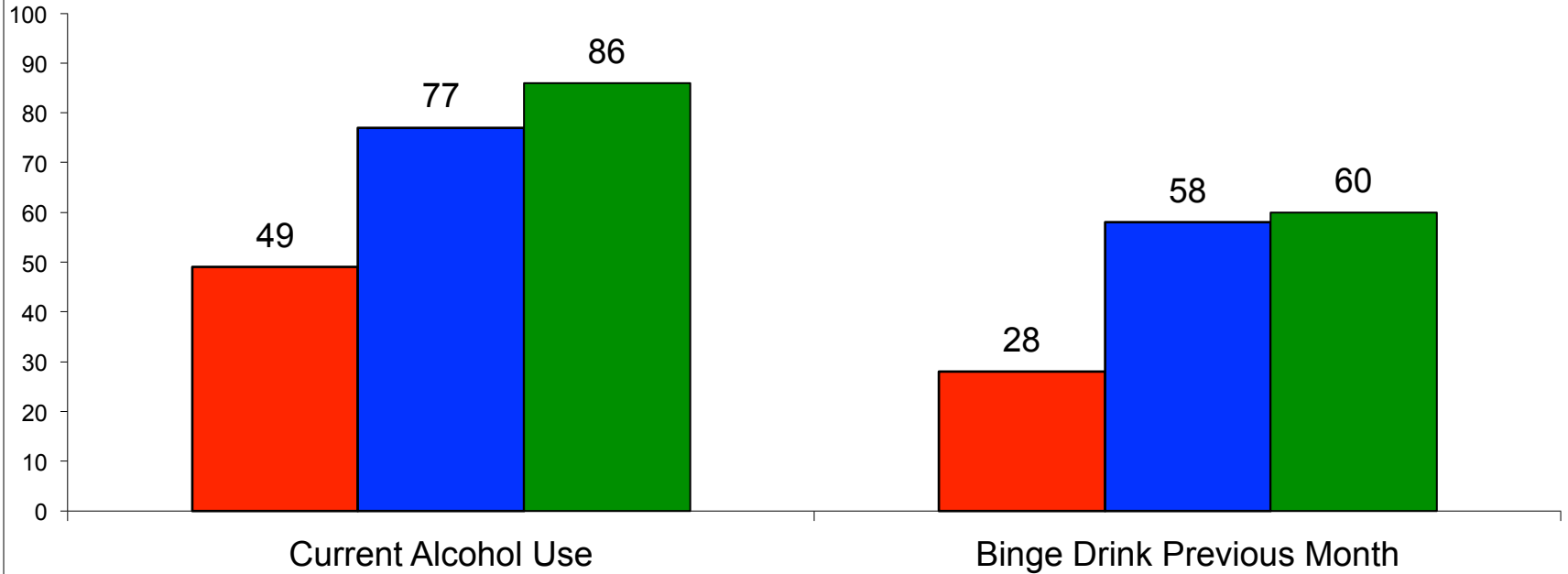
■ Secular Private Schools

Behavioral Variables

- Current alcohol user (1+ drink previous month) – Yes/No.
- Binge drink: 5 or more drinks on one occasion in the previous month – Yes/No.
- Had sexual intercourse – Yes/No.
- 2+ Sex partners, previous year – Yes/No.
- 6+ Sex partners, lifetime – Yes/No.
- Current marijuana user (1+ previous month) – Yes/No.
- Current User Other Illegal Drug (1+ previous month) – Yes/No.
- 1+ arrest, lifetime – Yes/No.

Figure 2

Alcohol Use by School Type



Comparative Percentages

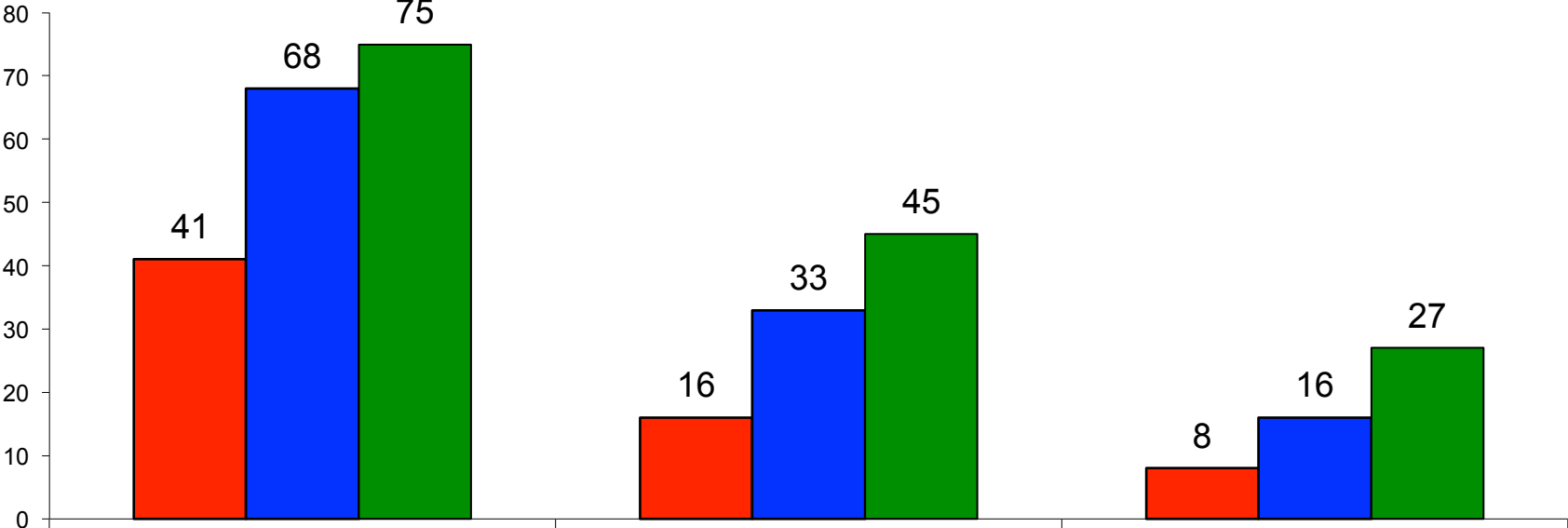
■ Christian Schools

■ State Schools

■ Secular Private Schools

Figure 3

Sexual Behavior by School Type



Had Premarital Sex

2+ Sex Partners Previous Year

6+ Sex partners Lifetime

Comparative Percentages

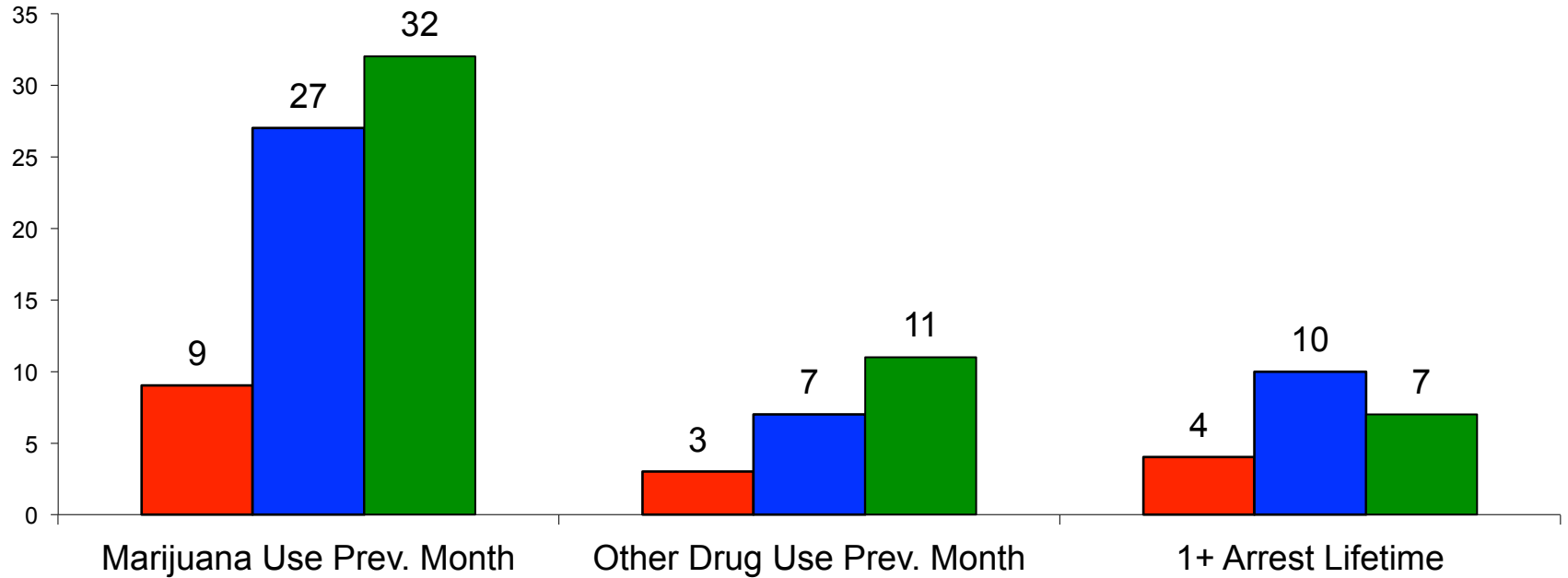
■ Christian Schools

■ State Schools

■ Secular Private Schools

Figure 4

Illegal Behavior by School Type



Comparative Percentages

■ Christian Schools

■ State Schools

■ Secular Private Schools

**Table 1. Religion & Deviance
6 Public vs. 6 Private Schools**

| | Current Alcohol Use | Binge Drink | Had Sex | Lifetime Sex Partners | Marijuana Use Ever | Other Drug Use Ever |
|---------------------------------|------------------------------------|------------------------|--------------------|--------------------------------------|-------------------------------|------------------------------------|
| Independent Variables | | | | | | |
| Age | .275** | .063** | .136** | 1.536** | 0.006 | 0.02 |
| Standardized Coefficient | .105** | .049** | .107** | .211** | 0.003 | 0.025 |
| Gender (M=1) | .233** | .112** | .043* | .422** | .234** | .053** |
| Standardized Coefficient | .111** | .108** | .042* | .072** | .161** | .085** |
| Race (Non-Anglo=1) | -.270** | -.151** | -.061** | -.148 | -.070* | -.009 |
| Standardized Coefficient | -.124** | -.140** | -.058** | -.025 | -.047* | -.013 |
| Religiosity Scale | -.019** | -.009** | -.009** | -.047** | -.009** | -.002** |
| Standardized Coefficient | -.209** | -.201** | -.205** | -.184** | -.148** | -.068** |
| Fundamentalism Scale | -.009 | -.004 | -.006 | -.018 | -.012** | -.003 |
| Standardized Coefficient | -.033 | -.027 | -.045 | -.025 | -.069** | -.037 |
| School (6 Private=1) | -.353** | -.152** | -.135** | -.366** | -.099** | -.015 |
| Standardized Coefficient | -.168** | -.146** | -.133** | -.058** | -.069** | -.024 |
| **p < .01 | | | | | | |
| *p < .05 | | | | | | |
| R Squared | 0.145 | 0.121 | 0.106 | 0.11 | 0.083 | 0.021 |

**Table 2. Religion & Deviance
3 Public vs.3 Religious Schools**

| | Current Alcohol Use | Binge Drink | Had Sex | Lifetime Sex Partners | Marijuana Use Ever | Other Drug Use Ever |
|---------------------------------|------------------------------------|------------------------|--------------------|--------------------------------------|-----------------------------------|------------------------------------|
| Independent Variables | | | | | | |
| Age | .271** | .073* | .376** | 1.268** | -0.043 | 0.001 |
| Standardized Coefficient | .093** | .051* | .137** | .163** | -0.022 | 0.001 |
| Gender (M=1) | .245** | .103** | .125** | .436** | .210** | .052** |
| Standardized Coefficient | .117** | .099** | .064** | .078** | .150** | .081** |
| Race (Non-Anglo=1) | -.242** | -.164** | -.123** | -0.255 | -.077* | -0.006 |
| Standardized Coefficient | -.112** | -.151** | -.060** | -0.044 | -.053* | -0.009 |
| Religiosity Scale | -.016** | -.009** | -.013** | -.043** | -.007** | -0.001 |
| Standardized Coefficient | -.165** | -.178** | -.147** | -.166** | -.101** | -0.027 |
| Fundamentalism Scale | -0.005 | -0.002 | -0.009 | -0.002 | -.020** | -0.004 |
| Standardized Coefficient | -0.019 | -0.016 | -0.034 | -0.003 | -.107** | -0.051 |
| Schools (3 religious=1) | -.538** | -.237** | -.315** | -.887** | -.161** | -.050** |
| Standardized Coefficient | -.266** | -.236** | -.165** | -.162** | -.118** | -.080** |
| **p < .01 | | | | | | |
| *p < .05 | | | | | | |
| R Squared | 0.182 | 0.162 | 0.106 | 0.115 | 0.091 | 0.023 |

**Table 3. Religion & Deviance
3 Public vs. 3 Secular Private
Schools**

| | Current Alcohol Use | Binge Drink | Had Sex | Lifetime Sex Partners | Marijuana Use Ever | Other Drug Use Ever |
|------------------------------------|------------------------------------|------------------------|--------------------|--------------------------------------|-----------------------------------|------------------------------------|
| Independent Variables | | | | | | |
| Age | .094** | .010 | .122** | 1.606** | .033 | .033 |
| Standardized Coefficient | .099** | .009 | .111** | .235** | .020 | .049 |
| Gender (M=1) | .019 | .132** | .011 | .445* | .277** | .058** |
| Standardized Coefficient | .022 | .128** | .011 | .072* | .183** | .097** |
| Race (Non-Anglo=1) | -.136** | -.155** | -.069* | -.072 | -.074 | -.015 |
| Standardized Coefficient | -.156** | -.146** | -.068* | -.011 | -.047 | -.025 |
| Religiosity Scale | -.006** | -.007** | -.008** | -.036** | -.011** | -.002* |
| Standardized Coefficient | -.177** | -.160** | -.186** | -.139** | -.174** | -.096* |
| Fundamentalism Scale | .001 | .001 | -.003 | -.011 | .003 | .000 |
| Standardized Coefficient | .009 | .011 | -.024 | -.014 | .014 | .000 |
| Schools (3 Secular Priv.=1) | .048 | .044 | .019 | .670** | .028 | .037 |
| Standardized Coefficient | .053 | .040 | .018 | .102** | .018 | .057 |
| **p < .01 | | | | | | |
| *p < .05 | | | | | | |
| R Squared | 0.085 | 0.074 | 0.070 | 0.119 | 0.070 | 0.031 |

Summary – Drinking, Sex, Drugs, Community

- Edgy behavior increases with age.
- College men drink, drug, and have more sex than college women.
- Anglos drink, drug, and have more sex than others. (Asian influence?)
- Fundamentalist beliefs are inconsequential throughout.
- Religiosity persists as a predictor of normative behavior.
- Independent of Religiosity, Public university respondents drink, drug, and have more sex than Private university respondents.
- Independent of Religiosity, Public vs. Private behavioral differences carried almost entirely by Christian school respondents. (Actively Religious Communities)

Generating and Maintaining Moral Community

The mix of Values and Interests:

- Regulation and ideology – Muslims at Christian Schools.
- Active and consequential surveillance – Honor Code for reporting behavior.
- Values + Interests = Normative Behavior.

(“We can’t make you do it ...
... but we can make you wish you had”).